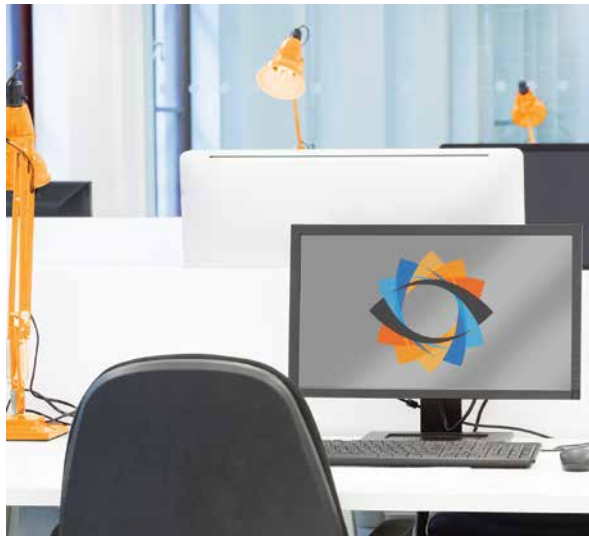


# What is B-FIELD?



BRICKENDON



B-FIELD is a solution for clients that need desks & facilities for project teams but don't have space for them to sit with the rest of the team.

Many of our clients face the same dilemma: teams would rather be onsite but there's just nowhere to put them.

Renting short-term office space directly is problematic both logistically and from a timing point of view. Budget would have to be secured separately, contracts would need to be agreed via facilities, and time is often a critical factor.

B-FIELD removes these obstacles by providing near-site office space under a normal Statement

of Work, with the cost of the office covered by a small on-charge to the Brickendon resource rates.

The main factors that influence the on-charge are the cost of the office and the number of Brickendon resources in the team across which the cost can be spread.

There are many office locations available in and around central London, including Liverpool Street, London Bridge and Canary Wharf. Your team could be next door to your main offices or slightly further away depending on how close you need them.



## Key Benefits of B-FIELD

- FAST TO SET UP – USUALLY WITHIN 1-2 WEEKS
- NO ADDITIONAL PAPERWORK – JUST A NORMAL SOW
- MULTIPLE LOCATION OPTIONS IN & AROUND LONDON
- RANGE OF OFFICE SIZES FOR 5 TO 100 RESOURCES OR MORE
- SECURE, SINGLE-CLIENT OFFICES
- HIGH-SPEED BROADBAND TO CONNECT TO YOUR LAN
- TYPICALLY LOWER COST THAN INTERNAL CHARGE RATES
- NEAR SITE LOCATION ENABLES MORE FREQUENT AND AD-HOC MEETINGS
- IMPROVED PRODUCTIVITY WITH CO-LOCATED TEAM
- FLEXIBILITY TO CANCEL WHEN NO LONGER NEEDED
- ABILITY TO FLEX THE PROJECT TEAM AS REQUIRED

If B-FIELD sounds like it could help your projects, get in touch to see how cost-effective it can be to keep your teams close by. Contact us on **0203 693 2605** or at **[info@brickendon.com](mailto:info@brickendon.com)** to discuss your requirements or request a tailored proposal.



BRICKENDON